



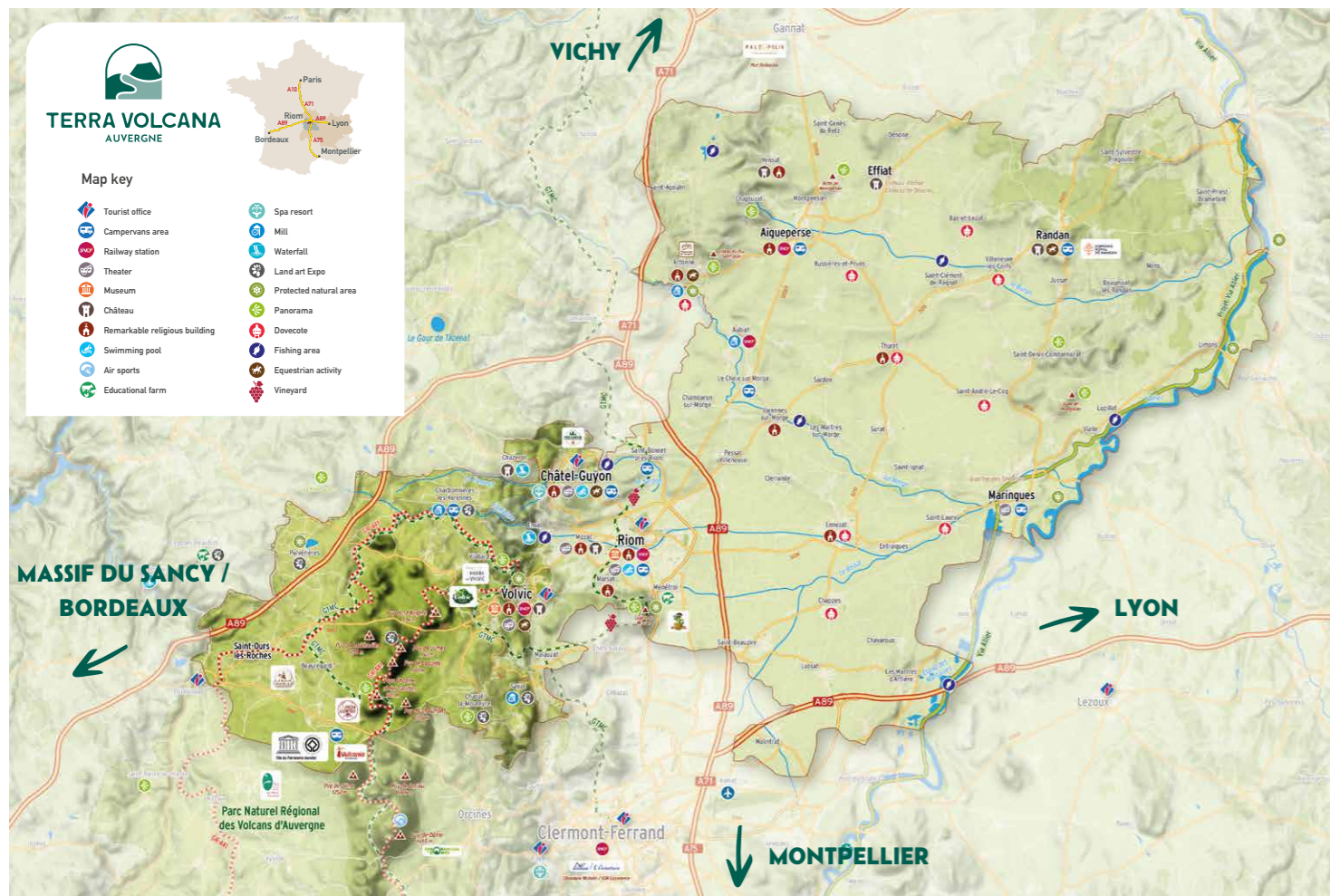
**TERRA  
VOLCANA**  
AUVERGNE | OFFICE DE TOURISME

# THE MANY FACETS OF AUVERGNE



**PRESS KIT**  
*2026*

[terravolcana.com](https://terravolcana.com)



## SUMMARY

**p4** Terra Volcana in Numbers

## FOLLOWING THE SEASONS *in the Chaîne des Puys*

- p6** Springtime Eruptions in Auvergne
- p8** Summer Energy & Volcanic Atmospheres
- p10** An Autumn & Winter haven in complete harmony

## LISTENING TO THE MURMUR *of Lava Stories*

- p12** Riom, a town dressed in Volvic stone
- p14** Volvic, all you need is lava
- p16** Châtel-Guyon to Randan, Auvergne's alluring eclecticism

## DECLARING ONE'S LOVE *for the Auvergne Way of Life*

- p18** Celebrating the Auvergne Way of Life
- p20** Chefs with a taste for life
- p22** Authentic villages to savour
- p24** 4 places to stay while visiting Terra Volcana



Puy Chopines et des Gouttes © Prod 03



Riom's clocktower © Prod 03



Thuret's church © Prod 03

Sculpture Thierry Courtadon, Chânat-la-Mouteyre © E.Foxyfofox



Dynamic and uplifting, generous and flavoursome, Terra Volcana is a destination that tells stories — stories shaped by its emblematic volcanic landscapes, its forward-looking spa town, its passionate craftspeople and producers, and, above all, a cultural and historical identity of its own. A true little Auvergne in miniature, full of surprises and encounters, a place that melt people together.

## FOLLOWING THE SEASONS *in the Chaîne des Puys*

Each season casts a different atmosphere on the **Chaîne des Puys**, listed as a UNESCO World Heritage site in 2018. **Spring** brings gentle light and strew the volcanic summits with flowers, while the characteristic beech forests of the mid-mountain ranges keep their coolness right through **summer**. **Nightfall** brings another layer of magic: Vulcania and the Volcan de Lemptéguy unveil night-time shows and illuminated trails that add mystery and wonder to two sites already fascinating by day. And when **autumn** arrives, colours soften, the light shifts, and Terra Volcana becomes a **cosy cocoon** for travellers and locals alike — a land of surprising outdoor experiences and deeply local flavours.

## LISTENING TO THE MURMUR *of Lava Stories*

Visitors are often intrigued by this dark grey volcanic stone that shapes so many towns and villages — a material that sparks the imagination of local artists. **Volvic stone is a unifying force**, embodying much of the identity of Riom, Volvic and many surrounding communities. A few steps away, **Châtel-Guyon**, the area's historic spa town, adds its own Belle-Époque elegance, with art-deco palaces and ornate villas. Not far off, **Randan's Royal estate** offers another stylistic shift, where brickwork, aristocratic history and uncommon features blend in unexpected harmony.

## DECLARING ONE'S LOVE *for the Auvergne Way of Life!*

If happiness lies in simple pleasures, Terra Volcana has a way of nurturing smiles. The **Aïga Resort & Spa in Châtel-Guyon**, home to Europe's most magnesium-rich waters, brings health and well-being together naturally. Local artisans and producers give the region its intensely authentic flavour — from sweet treats and volcanic wines to the long tradition of Auvergne charcuterie. And beyond the landscapes and produce, the Auvergne locals are true to themselves: discreet, open, warm, never shy of sharing their craft or their stories. A territory to savour, wholeheartedly.



## 2 DIFFERENT LANDSCAPES

> The **northern face of the Chaîne des Puys**, important part of Auvergne's volcanic heritage  
 > The **Limagne Plain**, shaped by centuries of agriculture, craftsmanship and human history

**56 CITIES AND VILLAGES**  
 88,000 inhabitants



## 22 VOLCANOES

listed as **UNESCO** World Heritage and 1 dedicated **visitor centre**

**1 PAYS D'ART ET D'HISTOIRE**  
 celebrating local heritage



**700 KM**  
 of **hiking trails**



**20 CYCLING AND MOUNTAIN-BIKE LOOPS**  
 for every level



**1 CITY LABELLED « SMALL TOWNS OF CHARACTER »**  
 Artonne

**1 LONG-DISTANCE HIKING ITINERARY** (GR®441)  
**2 MAIN CYCLING ROUTES** (GTMC – Via Allier)



**1 THRIVING THERMAL SPA TOWN**  
 Châtel-Guyon



**5 MAJOR ANNUAL INTERNATIONAL EVENTS**  
 Here there is **sweat and swing!**

## A FEW UNUSUAL *local experiences*



© H. Derus

### GOODBYE RED CARPET, HELLO HIKING BOOTS

Every year during the first week of the October holidays, Terra Volcana hosts a unique event: a **festival of guided walks**. No celebrities or spotlights here — only experienced mountain guides, friendly encounters and over forty activities blending sport, culture, music and gastronomy. A relaxed, convivial atmosphere rooted in the joy of exploring together the volcanic nature of Auvergne.

### A JOURNEY INTO AUVERGNE'S SUBSOIL AT RIOM'S REGIONAL MUSEUM

From May to October 2026, the Regional Museum of Auvergne in Riom hosts a major exhibition, showcasing the **region's extraordinary mineral deposits** — from amethyst (Europe's richest seam lies here) to fluorite and quartz. A must-see for anyone captivated by the hidden treasures of volcanic lands.

[rlv.eu/musees](http://rlv.eu/musees)



© J. Damase



© F. Bompan

### A LUCKY YEAR FOR CHÂTEL-GUYON

The permanent land art exhibition "Conjuguer la nature" by sculptor **Thierry Courtadon** expands in 2026 with a monumental new piece: a giant **Volvic-stone clover** overlooking the spa town from the Colline du Calvaire. A fresh way to rediscover Châtel-Guyon and its landscapes through contemporary art.

© M. Perrot



## L'IMPULSIF IS STEPPING UP ITS GAMES

After earning its first Michelin star in 2024, chef **Rémi Laroque** moves his restaurant L'Impulsif into a splendid art-deco villa in the heart of Châtel-Guyon. The setting becomes an elegant home for his refined fusion cuisine, subtly inspired by Asian flavours, with a dining room mixing street art and surprising tableware.

[l impulsif-restaurant.com/fr](http://l impulsif-restaurant.com/fr)

© Riot House



## RIOM EMBRACES ITALIAN FLAIR

Since 2025, Riom has welcomed the creative cuisine of **Mickaël Méjean** at "Augustine". Trained in prestigious kitchens including Marco Pierre White (London) and Michel Rostang (Paris), the chef revisits Italian classics with precision and imagination — including fresh pasta flambéed in a wheel of parmesan, prepared before the guests' eyes.

[augustine.restaurant](http://augustine.restaurant)

# WHAT'S NEW in 2026?

© Boutonprod



## HAPPY PLANTES REINVENTS HERBAL WELL-BEING

The renowned organic herbalist **Happy Plantes**, based in Châtel-Guyon, is experiencing a renaissance thanks to its young manager **Camille Monnier**, winner of the 2025 "101 Women Entrepreneurs" award given by the french state. Among the forthcoming innovations: an entirely new collection of infusions only to be tasted here!

[maison-happy.fr/accueil-happy-plantes/](http://maison-happy.fr/accueil-happy-plantes/)

© Parc Vulcania



## RAFTING ON THE LAVA FLOWS OF KILAUEA!

Beginning summer 2026, Vulcania unveils **Expedition Hawaii**, an immersive five-stage experience featuring special effects and interactive storytelling. Katia and Maurice Krafft, the famous volcanologists, are at the heart of this vibrant tribute to the volcanic world, combining lava flow crossings, spectacular eruptions, poetry, and emotion!

[vulcania.com](http://vulcania.com)



© Volcan de Lemptéguy

# SPRINGTIME ERUPTIONS *in Auvergne*

Spring is here and the volcanoes of the Chaîne des Puys are gently awakening from their winter slumber!

Their slopes turn green again, iconic sites reopen their doors, and the season fills with sporting challenges, open-air discoveries and surprising encounters in nature.

A vibrant, lively time — the season of renewal in every sense.

## VOLCAN DE LEMPTÉGUY AND VULCANIA: FAMILY MUST-SEE!

On the northern side of the Chaîne des Puys, **Vulcania** and the **Volcan de Lemptéguy** offer two complementary gateways into the world of volcanism — with a mix of education, storytelling and emotion.

Among the 80 volcanoes of the Chaîne des Puys, **Lemptéguy** is one of the most revealing. Transformed into a quarry after the Second World War, it now shows its inner structure in a way unique in the world: its vent, dykes, layers of ash and lava flows are indeed visible to the naked eye.

Geologist-guides are the only ones worldwide to interpret a volcano from inside its anatomy and they love to share their passion with enthusiasm. The site also bears the imprint of the **Montel family**, a visionary clan who have owned Lemptéguy since 1972 and were the first to open it both to scientists.

Next door, **Vulcania** Theme park

celebrates its 23<sup>rd</sup> season in 2025 with a programme that continues to evolve. From summer 2026, visitors will discover **Expedition Hawaii**, a spectacular immersive experience, alongside the park's major attractions such as France's largest **planetarium**, such as the very successful **roller-coaster Namazu** and the planetarium. This equipment, the largest in France, features a brand new year-round program as well as special events at springtime. Besides those highlights, more than 20 attractions await the adventurers. **Flying with a golden eagle** over Auvergne or witnessing **the awakening of the Auvergne volcanoes** are some of the experiences to be made here!

The film tribute to volcanologists Katia and Maurice Krafft, **Les Diables des volcans**, unveiled in 2025, remains one of the park's most moving highlights.

[auvergne-volcan.com](http://auvergne-volcan.com)  
[vulcania.com](http://vulcania.com)

## Nature's Cabaret at the Pulvérières Pond

Each spring, a remarkable spectacle takes place on the shores of the **Pulvérières pond**, one of the rare wetlands within the Regional Natural Park of the Auvergne Volcanoes.

Here, birdwatchers can spot more than 140 species — but the star performer is the **Great Crested Grebe**, whose courtship ritual is a mesmerising ballet danced directly on the water. Several discreet viewing posts along the 1,5 mile discovery trail allow visitors to witness this elegant scene without disturbing it.

[terravolcana.com/equipement/le-sentier-du-grebe-huppe/](http://terravolcana.com/equipement/le-sentier-du-grebe-huppe/)



© D. Gonthier

## Ten Years of the Volvic Volcanic Experience (VVX)

One of France's most anticipated trail-running events, the VVX will celebrate its 10<sup>th</sup> edition in 2026. Rooted in Volvic's dual identity of stone and water, the event blends **sport, concerts, open-air experiences and family-friendly activities** over the Ascension weekend.

At the heart of the programme: races ranging from **15 to 110 km**, visits of craftsmen and craftswomen's workshops, tree-climbing and live music and the uplifting "Run for You", designed to help people reconnect with sport at their own pace. Each year, the VVX pulls people together, celebrating Volvic and its surroundings!

[volvic-vvx.com](http://volvic-vvx.com)

## Cycling for Everyone

Since summer 2025, two **new family-friendly cycling circuits** have opened around Châtel-Guyon. Designed to encourage gentle mobility, they introduce visitors of all ages to the town's thermal heritage and surrounding natural landscapes.

Named **Birlou** and **Madagascar**, these routes complete a wider offer that includes **17 marked mountain-bike circuits** and **3 easy greenways** — Thermal Express, La Coulée de l'Ambène, and Au Fil de la Morge.

[terravolcana.com/je-prepare/activites/activites-de-plein-air/a-velo/](http://terravolcana.com/je-prepare/activites/activites-de-plein-air/a-velo/)

© Pord 03





© Volcan de Lemptégny

# SUMMER ENERGY

## & Volcanic Atmospheres

Summer in Terra Volcana is vibrant and luminous! Inhabitants and visitors embark on a season shaped by night-time spectacles, volcanic landscapes revealed in all their detail, and places where life unfolds gently, outdoors, in the evening breeze. An energetic yet deeply welcoming Auvergne.

### VOLCANOES BY NIGHT: A SUMMER RITUAL

When temperatures soften at dusk, the region's major tourist attractions are dressed to the nines! Light, sound and volcanic silhouettes come together to create evenings unlike anywhere else.

Throughout July and August, the **Volcan de Lemptégny** reveals itself in a palette of unexpected colours. **The Volcano's Awakening**, a night-time walking experience through the very heart of the crater, blends poetry, special effects and storytelling.

The hero of this luminous tale? A shimmering fox on a mission to reignite the hidden fire of Lemptégny

— a mystical narrative that enchants both adults and children.

Just a few minutes away, **Vulcania** theme park hosts fourteen summer nights and a brand new show. The low light pollution of the Chaîne de Puys makes the volcanoes exceptional observations points. Vulcania theme park takes the opportunity to organize 4 “**Astronomiales**” nights for astronomy lovers.

[vulcania.com/animation/vulcanova-la-nuit-des-enchanteurs/](http://vulcania.com/animation/vulcanova-la-nuit-des-enchanteurs/)  
[auvergne-volcan.com/parcours-nocturne-le-reveil-du-volcan/](http://auvergne-volcan.com/parcours-nocturne-le-reveil-du-volcan/)

### Hike-Volcano: Hiking the Puy des Gouttes

Few walks offer such a concentrated view of the Chaîne des Puys as the ascent of the **Puy des Gouttes**. A 6 km trail — accessible yet rewarding — leads hikers to an extraordinary panorama stretching across the central plateau, a dozen volcanic cones, the distant Sancy massif, the Combrailles plateau and beyond.

The volcano's specific geological story is etched into its slopes and crater, reminding visitors that each of the Chaîne des Puys' 80 volcanoes has its own identity and rhythm.

As a bonus, the trail passes through one of the most remarkable beech forests in the range — an atmospheric, sculptural woodland reminiscent of Tim Burton's “Sleepy Hollow”.

© Prod 03



© Inside

### A Refreshing Journey into Lava at 10°C

At the **Grotte de la Pierre de Volvic**, visitors can choose between two contrasting experiences. First of all, the **historical tour** features film recreations illustrating the development of Volvic's stone quarries. Then, the **Grotte des Lumières** shows an immersive tale where special effects accompany the adventures of a young otter confronting the Spirit of Water in a mineral setting full of colours. In both cases, the cave — a 10,000-year-old lava flow — offers a natural cooling system: it remains at **10°C** throughout the summer. A true volcanic refuge when the sun is high.

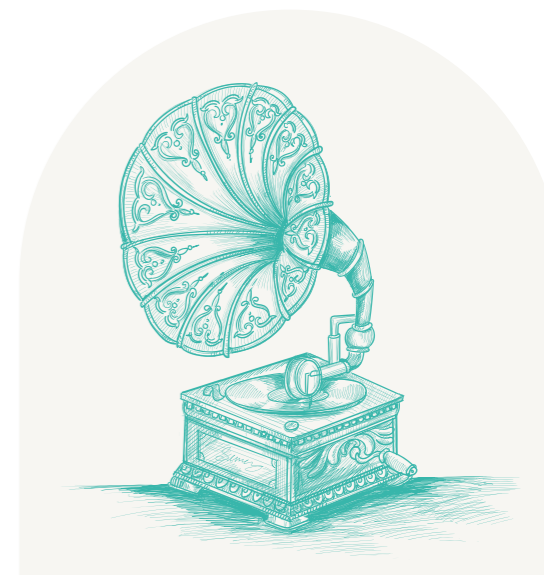
[grotte-pierre-volvic.fr](http://grotte-pierre-volvic.fr)

### Les Vinzelles: Where Food, Books & Music Meet

On the outskirts of Volvic, a thoughtful, human-scale experiment flourishes for 3 years now: **Les Vinzelles**, a cultural and unusual place created by Laure and Clémence Desbruères. In this former estate with sweeping gardens, visitors enjoy a bookshop in a place where culture is not always within reach, a restaurant highlighting locally farmed products and a programme of concerts and events with national and international guests.

In summer, **open-air musical siestas** turn the gardens into a haven for listeners stretched out in deckchairs, soaking in gentle melodies. A space where time feels different.

[lesvinzelles.com](http://lesvinzelles.com)



# AN AUTUMN AND WINTER HAVEN

*in complete harmony*

The end of the year suits Terra Volcana beautifully. As waterfalls regain their strength after summer, colours deepen and temperatures drop, the territory shifts into a softer, more intimate rhythm. A season for contemplation, warmth and slow discoveries.

## ROAMING FROM WATERFALL TO WATERFALL

After the heat of summer, the **Ambène stream** comes back to life and to water in autumn, revitalising one of the region's most evocative landscapes: the **Gorges d'Enval**, an 8.5-km trail once cherished by writers such as George Sand and Maupassant.

Here, walkers move from the **Petit and Grand Gornand** waterfalls to the evocatively named "**Bout du**

**Monde**", surrounded by chestnut groves and spectacular panoramas. A setting shaped by water, geology and centuries of human activity.

The Ambène also played a key role in the development of **Riom**, powering its medieval tanneries from the 14<sup>th</sup> century onwards — a reminder of how nature and heritage intertwine throughout Terra Volcana.



© A. Ith

## A Sky Full of Stars

Autumn is one of the best seasons for stargazing. Day or night, the sky becomes a show in itself. Since 2023, **Vulcania** has been home to **France's largest planetarium**, offering a year-round programme of immersive screenings, workshops and astronomy-themed events.

In early October, the **Science Week** spreads across Terra Volcana, opening spaces of discovery and dialogue for curious minds of all ages.

[vulcania.com/planetarium/](http://vulcania.com/planetarium/)

© Parc Vulcania



## A Fireplace and some craft beers at the Dark Lab

Among Terra Volcana's warm, sociable places, few have the charm of the **Dark Lab brewpub**, set in a traditional Auvergne farmhouse.

A large stone fireplace brings people together on chilly days, while the brewer crafts some of the region's most distinctive beers. Here, conviviality comes naturally — often accompanied by a generous **truffade**, Auvergne's quintessential winter dish.

Throughout the year, the Dark Lab hosts events that mix culture and community: concerts, artistic performances, subculture events and more.

[dark-lab.fr](http://dark-lab.fr)

## When sea of clouds emerge from the volcanoes

Each winter, a striking natural phenomenon occurs: the apparition of vast **sea of clouds** across the Chaîne des Puys. Thanks to a meteorological effect known as the **Foehn one**, the volcanic summits — from the Puy de Jumes to the Puy des Gouttes or the Puy de la Bannière, above Volvic — rise like islands above an ocean of mist. Those tremendous shows leave for sure a vivid imprint on the hikers lucky enough to witness it.

© P. André



# Riom, A TOWN DRESSED IN VOLVIC STONE

At the heart of a 31-towns labeled “Pays d’Art et d’Histoire”, Riom stands out for its elegant Renaissance architecture and its abundance of Volvic stone mansions, fountains and facades.

In 1751, naturalist **Jean-Étienne Guettard**, fresh from visiting Vesuvius, passed through Riom. Looking at the town’s multiple lava-stone fountains, he made a groundbreaking connection: the surrounding mountains of the Puy-de-Dôme were in fact **extinct volcanoes**. This revelation was indeed the starting point of volcanic studies, studies that are still ongoing today.

Today, visitors can stroll from the **Hôtel Guymoneau**, with its 16th-century carved decor to the **Tour de l’Horloge**, Riom’s very own “Big Ben”, offering panoramic views, passing by the **Town Hall courtyard**, home to two busts sculpted by Rodin. Nearby, the richly decorated **Maison des Consuls**, the precious **Sainte-Chapelle** — last remnant of the ducal palace of Jean de Berry. Very close to those monuments, **Romanesque Abbey of Mozac**, with its remarkable carved capitals, complete an itinerary where heritage unfolds at every corner.



Riom, high street © Prod03

## LES FRÉNÉSIES — *Summer Eruptions of Culture*

Since 2023, Riom has hosted **Les Frénésies**, an ambitious summer music festival that brings major French and international artists to the heart of the historic centre. Recent editions have welcomed **Alice Merton, Superbus and Raphaël**, performing in an atmosphere that blends cultural ambition with friendly, human-scale charm.

The 2026 line-up remains under wraps, but promises festive evenings for those pairing concerts with heritage discovery.

[ville-riom.fr](http://ville-riom.fr)



© J. Kamel / Ville de Riom



The «tuffade» from En Attendant Louise's restaurant © J.P. Giraud Photographies

## RICOMAGUM *A Market Town with Flavour*

Riom’s name comes from the Gallo-Roman **Ricomagum**, meaning “the rich market”. And indeed, beyond its architecture, the town surprises with culinary craftsmanship such as the award-winning cured meats of **Maison Rochette**, the refined creations of the young **Chocolaterie Vidal** but also characterful restaurants such as **BHV, Augustine**, or **En Attendant Louise**, a local institution known for its traditional recipes.

Between Riom and Châtel-Guyon, the vineyards of **Madargue** are regaining vitality thanks to a new generation of winemakers — including **Julien Déat, Benoît Montel and Laurent Vigneron** — who are breathing new life into the **AOC Côtes d’Auvergne** appellation.

These wines, shaped by volcanic soils, offer characterful cuvées full of stories.

## MUSEUMS OF RIOM — *From design to mineral heritage*

Housed in two 18th-century mansions, the **Mandet Museum** explores fine arts, decorative arts and, above all, design. From June to December 2026, the museum hosts designer **Emilie Lemardeley**, whose installations draw on Art Nouveau, folklore, and the organic shapes of nature. Her sound pieces, illuminated artworks and narrative furniture transform the visit into an almost initiatory journey.

Just steps away, the **Regional Museum of Auvergne** focuses on 19th-century rural life. From May to October 2026, its new exhibition highlights Auvergne’s mineral treasures such as amethyst, fluorite, quartz and more, offering a geological counterpoint to the region’s human stories.

[rlv.eu/musees](http://rlv.eu/musees)



Mandet Museum © H. Derus



# Volvic

## ALL YOU NEED IS LAVA

Few towns embody the volcanic identity of Auvergne as vividly as Volvic. Here, stone and water — born from the same eruption — shape both the landscape and the local imagination.

The story begins 13,000 years ago, with the complex eruption of the Puy de la Nugère, whose lava flows created the material that would one day build cathedrals, fountains, prestigious mansions and works of art.

Known as the “eternal stone”, Volvic trachyandesite rock has long inspired architects and artists. Its virtues are legendary as it resists to frost, to pollution and chemical products are unable to harm it.

From the late 13<sup>th</sup> century onwards, masons and sculptors learned to work this demanding material, turning it into a defining feature of Auvergne’s identity. Today, Volvic stone can be found on orientation tables all over the world and in the workshops of sculptors who continue to explore its expressive power.

The best place to meet them is the **Maison de l’Artisanat et de la Pierre**, where master craftspeople and emerging artists display creations that show how volcanic stone can be both rough and delicate.



Sahut museum and Volvic's church © E. Foxyfofox

## LAVA STORY

### at the Sahut Museum

An unexpected setting houses another chapter of this heritage: the **Château des Bosredon**, once home to the lords who opened Volvic’s first lava-stone quarry in 1248.

Today, it is the home of the **Sahut Museum**, a cultural space with a dual identity. On one side, the works and collections of painter **Marcel Sahut**, himself descended from stone workers and the other one exhibitions spaces focused on the **arts of lava**, expanding since 2022.

In 2026, the museum continues to enrich its exploration of enamelled lava — a technique born in 1827 and perfected through the early 20<sup>th</sup> century. The room “**From Mortelèque to Michelin**” describes this evolution, from the very first enamelled plaque to the iconic **Michelin road signs**, officially approved in 1931. The exhibition brings together rare pieces from major French institutions — Louvre, Sèvres, Carnavalet — alongside works by **Joseph Barbiéro**, a key figure of Art Brut whose Volvic-stone sculptures are well-known by visitors of the Centre Pompidou in Paris.

[ville-volvic.fr/musee-sahut](http://ville-volvic.fr/musee-sahut)

## THIERRY COURTADON:

### Sculpting Emotion from Lava

Among contemporary artists working with this magical stone, **Thierry Courtadon** stands apart. Son, grandson, and great-grandson of stonemasons, his relationship with this particular material is intimate, instinctive and he composes with its density and fractures as others might with clay or fabric.

His showroom in Volvic feels like a real treasure chamber, filled with pieces that explore movement, shadow, transparency and tension.

In 2026, Thierry Courtadon unveils a new masterpiece: a monumental **Volvic-stone** clover overlooking **Châtel-Guyon** from the Colline du Calvaire. This new sculpture completes the contemporary art trail *Conjuguer la Nature*, which features several of his monumental lava stone sculptures — **Whispering, Contemplating, Suspended, Compressed, Undulating** — placed along paths and village edges around Volvic.

[ateliercourtadon.com](http://ateliercourtadon.com)



« Contempler » © A. Ith

# Châtel-Guyon to Randan

## AUVERGNE'S ALLURING ECLECTICISM

### Châtel-Guyon A JOURNEY FROM ART NOUVEAU TO ART DECO

Anyone wandering through **Châtel-Guyon** quickly notices it: the town holds two distinct identities. On one side, this is the former winegrowing village. Here, narrow streets climb the hillside, recalling the town's early days as a modest vineyard community. At the top stands **Saint-Anne Church**, whose neo-Byzantine frescoes painted by **Nicolaï Greschny** during the winter of 1956 bring both warmth and an unusual touch to the small sanctuary.

On the other, the 19th-century rise of thermal tourism transformed Châtel-Guyon into an elegant spa resort. Around the thermal springs, Art Deco villas, grand hotels, exotic façades and lush gardens still echo the optimism of the era. Visitors move from the Italian-style theatre — conceived in 1898 and expanded in 1909 — to the monumental Grands Thermes, whose architecture draws on both ancient and Romanesque inspirations.

Gourmets pause for a meal at the **Michelin-starred restaurant L'Impulsif**, or taste the local **Pouzzolane biscuits**, shaped like volcanic pebbles. Craft lovers may be found admiring the fine and innovative blades of **Coutellerie Lug**.

Châtel-Guyon rekindles this festive elegance and the carelessness from that time each Pentecost weekend with **Jazz aux Sources**. This joyful, swing-infused festival celebrates dance, improvisation and takes inhabitants and visitors far away from their everyday lives.

[chatel-guyon.fr](http://chatel-guyon.fr) / [jazzauxsources.com](http://jazzauxsources.com)



Thermal springs, Châtel-Guyon © Ville de Châtel-Guyon



Randan's Royal estate © F. Bompan



Artonne

A MEDITERRANEAN  
WHISPER IN  
THE LIMAGNE PLAIN

The french label "Petite Cité de Caractère"\* suits Artonne well.

This former fortified winegrowing village stands on a slope, its pale limestone walls glowing under the sun and building a striking contrast to the dark lava stone predominant elsewhere.

Its assets include a network of 13 historic fountains, a luminous collegiate church and, as a grand finale, a superb panoramic viewpoint from the **Puy-Saint-Jean**, an ancient natural site inhabited since the Neolithic period.

With its winding alleys and warm colours, Artonne almost invites visitors to adopt a southern accent as they stroll.

[petitescitesdecaractere.com/cites/artonne](http://petitescitesdecaractere.com/cites/artonne)

\*"Small towns of character"

### A ROMANTIC ESCAPE to the Royal Estate of Randan

In 1821, **King Louis-Philippe** acquired the modest **Château de Randan** and set about transforming it into a royal residence. Its flourishing years would be brief because, in 1925, a devastating fire struck leaves the estate in ruins.

Unlike the volcanic stone of neighbouring towns, Randan is primarily built of **brick**, giving it a rather different atmosphere. Today, visitors can approach the remains of the chateau, explore the preserved **kitchen wing**, wander the landscaped park and its neo-classical **chapel**, and discover a treasure that miraculously survived the flames, "Retour d'Expédition". This rare zoological collection, housed on site, is the one of **Prince Ferdinand d'Orléans**, a hunting enthusiast from the early 20<sup>th</sup> century. **450 taxidermied animals**, mounted by once famous taxidermist **Rowland Ward**, are to be found, arranged exactly as the prince had envisioned them.

It stands definitely as one of France's most unusual and historically significant zoological ensembles.

[domaine-randan.fr](http://domaine-randan.fr)



Artonne © F. Bompan



Aïga Resort - Châtel-Guyon © D. Grudet

# CELEBRATING THE AUVERGNE *Way of Life*

Beyond its volcanoes and heritage, Terra Volcana cultivates a rhythm shaped by well-being, craftsmanship, heartfelt hospitality and the generosity of its landscapes. Here, serenity and human warmth go hand in hand.

## AÏGA RESORT — THERMALISM & HEALTH PREVENTIVE PIONEER

Set in a privileged setting, the Aïga Resort thermal complex offers a full recharge of positive energy with top-notch facilities and activities: a thermal spa with lava-colored waters, a state-of-the-art thermal establishment, a \*\*\*\* residence, a restaurant that combines gourmet and healthy cuisine, sports activities, nutrition workshops, and a partnership with ASM Vitalité.

In 2026, four health prevention stays from late March to mid-October will offer an innovative program focused on Full Health and prevention, including thermal treatments, personalised

fitness activities, and workshops on nutrition and stress management.

These stays take advantage of Europe's most **magnesium-rich waters**, also high in silicon and trace elements. Thanks to these qualities, rooted in the geological past of Puy-de-Dôme, the resort is recognized for microbiota care, digestive and rheumatological health, and the **Full Health concept**. The underlying belief: thermal cures are also a way to maintain lifelong health.

[aiga-resort.com](https://aiga-resort.com)  
2026 season,  
from March 30 to December 5

## A TRUE CAPITAL OF HAPPINESS *in an authentic village*

Between Riom and Vichy lies the village of Aubiat, and within it, the hamlet of Persignat, where the skyline of the Chaîne des Puys forms a postcard-like horizon.

Here, young cheesemaker **Manon Bouterige** cares for her lively herd of 130 goats. Around fifteen variations of goat's cheese are made on site, complementing the region's emblematic cow's milk cheeses such as **Saint-Nectaire** or **Fourme d'Ambert**.

A few seconds away by foot, the lodging **La Mater** offers a different kind of refuge, still at the middle of the countryside. In this quiet, family-run haven, **Véronique Pillot-Bouhier** practises also intuitive massage with a gentle and attentive approach that invites visitors to slow down and breathe.

[terravolcana.com/producteur/les-chevres-de-limagne-gaec-persi-agri](https://terravolcana.com/producteur/les-chevres-de-limagne-gaec-persi-agri)  
[v-pillot-bouhier.com](https://v-pillot-bouhier.com)

Les Massages de Véronique © S. Joubert



© Festival du Guérinet

## HOSPITALITY & GOOD VIBES *at the Guérinet*

Once a hunting lodge for the Royal Estate of Randan, the **Château du Guérinet** is today a warm and welcoming guesthouse run by an energetic young couple.

Its four characterful rooms attract guests in search of a peaceful retreat.

Each summer, the estate hosts the **Festival du Guérinet**, a multidisciplinary event mixing international classical music, open-air guinguette evenings, children's yoga sessions, theatre workshops and nature walks accompanied by live music. Hard to find an event offering such varied experiences!

The festival, created in 2020, embraces openness and artistic curiosity, bringing people together with simplicity and joy.

[chateau-guerinet.com](https://chateau-guerinet.com)



© O. Octobre

## RÉMI LAROQUE THE MICHELIN- STARRED “IMPULSIVE” CHEF

With a rugby player's shoulders and the smile of an eternal optimist, **Rémi Laroque** leads the Michelin-starred **L'IMPULSIF**.

His cuisine is a refined fusion inspired by Auvergne's terroir and his Vietnamese grandmother, Thibé who taught him everything about cooking. On the plate, local produce meets delicate Asian notes for a journey not to be tasted elsewhere. In the dining room, metal sculptures and touches of street art set a bold tone.

[limpulsif-restaurant.com](http://limpulsif-restaurant.com)



# CHEFS WITH A TASTE FOR LIFE



© Table Brayaude

## MARTINE MICOINE THE TRUFFADE THAT SMILES

On monotonous Sunday evenings, locals head to **LA TABLE BRAYAUE** in Châtel-Guyon, where chef **Martine Micoine** has been sharing her good humour and hearty recipes for more than 30 years.

Her **truffade**, made with cheese and potatoes from Auvergne remains a beloved favourite, among other traditional and tasty recipes.

[latablebrayaude.fr](http://latablebrayaude.fr)



© E. Champeyroux

## BARDIN, FATHER & SON AN AUVERGNAT “BOUCHON” ATMOSPHERE

When Mathieu Bardin brought his father Stéphane on board the **BOUCHON BRAYAUD** adventure in April 2023, the entire village of Saint-Bonnet-Près-Riom caught their contagious joie de vivre! Passionate about Lyonnaise cuisine, Mathieu sources local products to create signature dishes such as beef bourguignon, tablier de sapeur, and coq au vin. Stéphane's desserts, meanwhile, delight the young at heart across Terra Volcana—especially his praline tart, more Lyonnaise than ever!

[le-bouchon-brayaude.eatbu.com](http://le-bouchon-brayaude.eatbu.com)

Terra Volcana's culinary scene is shaped by chefs who respect tradition while confidently rewriting it. Here, cooking is personal, generous and rooted in the region's ingredients.



### *Chefs to discover!*

Released in 2025, the booklet **“PORTRAITS DE CHEFS”** features 24 pages devoted to the territory's culinary creators, as an invitation for travellers and locals alike to meet the creators behind the flavours.

[terravolcana.com/brochures/](http://terravolcana.com/brochures/)  
(Only available in french for the moment)



© V. Kusniak

## MICKAËL MÉJEAN FORZA ITALIA IN RIOM

In Riom's historic centre, chef **Mickaël Méjean** brings Italian inspiration to **AUGUSTINE** not by imitation, but through true culinary craftsmanship.

Fresh pasta is made daily and flambéed in a **wheel of parmesan** before diners' eyes.

Traditional dishes are reinvented with personality, such as a **Pot-au-Feu** revisited with a scoop of old-style mustard ice cream.

[augustine.restaurant](http://augustine.restaurant)



Tanneries, Maringues © F. Bompan

# AUTHENTIC VILLAGES

## to savour



The Maringuois © M. Nevoux

### MARINGUES — HISTORIC TANNERIES, A GREENWAY AND A FARMHOUSE GAPERON

Halfway between Clermont-Ferrand and Vichy, the town of Maringues has reinvented part of its historic riverside with a 6 km greenway opened in 2025 along the Morge River, heading toward the Allier.

This active-mobility route follows the traces of the boatmen who helped make Maringues the tanners' town of Auvergne. In the 16<sup>th</sup> century, the town held Auvergne's **second-largest commercial market**, and more than **60 tanneries** were still active here in 1860. Today, only the **Tannerie Grandval** and the **Grande Tannerie** remain — rare survivors of an exceptional industrial past.

A few kilometres away lies the **Butte de Montgacon**, home to **Patricia**

**Ribier** and her family, guardians of one of Auvergne's most emblematic — and least known — cheeses: the **maringuais**, or farmhouse "gaperon". This tasty hidden gem is made from raw cow's milk and Auvergne pink garlic, brought to perfection through traditional craftsmanship passed down through generations. It is produced today by the fourth generation, with **Sylvain and Élodie Ribier** carrying the torch for a story of resilience, transmission and deeply local flavour.

[facebook.com/p/Le-Maringuais-Gaperon-Fermier-61559907749594/](https://facebook.com/p/Le-Maringuais-Gaperon-Fermier-61559907749594/)

[patrimoineaurhalpin.org/2858-tanneries-de-maringues.html](https://patrimoineaurhalpin.org/2858-tanneries-de-maringues.html)

### VOLVIC — LAVA, CRAFTS & CHARCUTERIE

**Did you know? Only three stones in the world are suitable for enamel work on lava, and one of them is Volvic stone.**

In the heart of Volvic, the Filhouette and Coeur de Pierre workshops, together with Juste Pour Toi in Châtel-Guyon, continue to welcome curious minds and introduce them to the techniques of enameled lava—an art born in 1827 and still flourishing almost two centuries on.

Visitors can take part in workshops to choose a piece of volcanic stone, apply colour and patterns and fire their creation in the kiln, leaving with a truly local souvenir. **The Boutique 2 Curiosités** in Châtel-Guyon also features local craftspeople and offers

creative workshops from leatherwork to sand painting.

A short drive away, **La Ferme des Cormier** carries another tradition forward. Here, **Julien**, a former plumber, and **Anne**, a former architect, joined forces with Julien's mother **Françoise** to revive artisanal Auvergne charcuterie on their organic farm.

Since 2011, their sausages, pâtés, rillettes and cured meats have delighted locals and travellers alike.

A new farm shop, opened in 2023, now welcomes visitors year-round.

[filhouette.fr](https://filhouette.fr)  
[fermedescormier.fr](https://fermedescormier.fr)  
[facebook.com/coeurdepierrevolvic](https://facebook.com/coeurdepierrevolvic)  
[facebook.com/justepourtoihero](https://facebook.com/justepourtoihero)

© Filhouette



© Aynaphotos

### CHARBONNIERES-LES VARENNES — WOMEN, A MILL & SWEET CREATIONS

Between Volvic and Saint-Ours, Charbonnières-les-Varennes is an authentic stonemason village and bears the marks of this heritage. Today the village is home to two remarkable women whose work enriches the local experience.

**Alexandra Samper** is the custodian of a historic flour mill already shown on the **Cassini Map of 1775** and converted into a cylinder mill in 1930. Her ongoing project includes free guided visits of the mill but also the preservation and enhancement of surrounding natural areas (now recognised by **five biodiversity labels**).

In 2026, a brand-new escape game will let visitors embark on the quest of an otter, a creature visible near the

mill. Not far away, **Amandine Elias**, chocolatier and confectioner, runs **Amandine & Chocolats**, where high-quality ingredients meet creativity and an everyday smile. Her specialties include handmade chocolates of course but above all remarkable fruit pastes flavoured with local **verbena** from Maison Genestine distillery and **gentian** from Cérés distillery. Skip the tasting, and Amandine is guaranteed to make a fuss!

[terravolcana.com/patrimoine-culturel/le-moulin-dedmond](https://terravolcana.com/patrimoine-culturel/le-moulin-dedmond)  
[amandine-et-chocolats.fr](https://amandine-et-chocolats.fr)

# 4 PLACES TO STAY

*while exploring Terra Volcana*



© Domaine de Cambrai

## DOMAINE OF CAMBRAI

A master house in the heart of Riom full of warmth



© N. Anetson

## VOLVIC ORGANIC RESORT

Eco-lodges on lava flows in Volvic



© Lodge de Lemptéguy

## LODGES DE LEMPTÉGUY

Knock, knock, knocking on volcanoes' door



© Les ombelles

## LES OMBELLES

Eco-friendly & Gourmet on the GR441 hiking trail

*Press contact*

AUVERGNE

**Coline Ribue**

+33 (0)4 73 33 28 29

c.ribue@terravolcana.com

*Press contact*

NATIONAL / INTERNATIONAL

**Sylvain Padeloup**

Syllab Communication

+33 (0)6 64 22 75 14

spadeloup@syllab-communication.fr

[terravolcana.com/en](http://terravolcana.com/en)

#TERRAVOLCANA

